

chris fougere  
Orthopaedic Surgeon

## SHOW HUNTER WAITEMATA 2019 – 2020 SUMMER SERIES

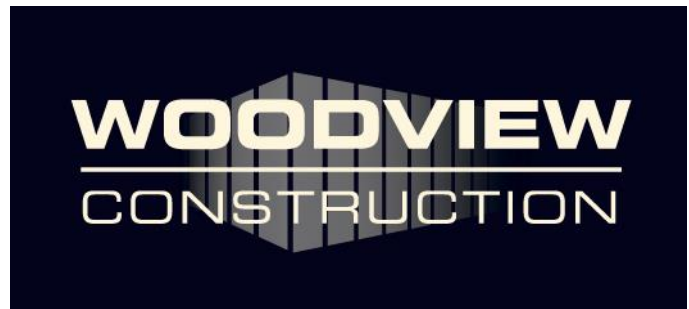


22 & 23 FEBRUARY 2020  
AT WOODHILL SANDS

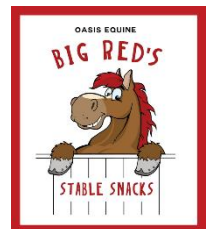
ENTER ONLINE AT [WWW.EQUESTRIANENTRIES.CO.NZ](http://WWW.EQUESTRIANENTRIES.CO.NZ)  
ENTRIES CLOSE MONDAY 17 FEBRUARY 2020



OUR FAMILY OF SPONSORS



**Kumeu Motors**



JOHNSTON  
ASSOCIATES  
CHARTERED  
ACCOUNTANTS  
LIMITED



Show Hunter Waitemata would like to extend a huge thanks to our family of local and series sponsors.



## SATURDAY 22 FEBRUARY 2020

All classes in the Premier Ring will be scheduled upon close of entries, this will be sent out prior to the commencement of our show.

PREMIER RING – No Warm Up		Height	EF
1	Category A Handy Hunter - HOYQ	70cm	\$15
2	<a href="#">Burmester Realty</a> Category A Dynamic Hunter	70cm	\$15
3	Category B Handy Hunter - HOYQ	80cm	\$15
4	<a href="#">Burmester Realty</a> Category B Dynamic Hunter	80cm	\$15
5	Category C Handy Hunter - HOYQ	90cm	\$15
6	<a href="#">Burmester Realty</a> Category C Dynamic Hunter	90cm	\$15
7	Open Horse Handy Hunter - HOYQ	100cm	\$15
8	<a href="#">Burmester Realty</a> Open Horse Dynamic Hunter	100cm	\$15

HORSE RING – 7am Warm Up Start – 8am Class Start		Height	EF
9	Introductory Hunter Warm Up	70cm	\$2
10	<a href="#">King Equine Osteopathy</a> Introductory Welcome Hunter (restricted to 80cm)	70cm	\$8
11	<a href="#">King Equine Osteopathy</a> Introductory Hunter (restricted to 80cm)	75cm	\$8
12	<a href="#">King Equine Osteopathy</a> Introductory Hunter (restricted to 80cm)	80cm	\$8
13	Rising Star & Open Hunter Warm Up	85cm	\$2
14	<a href="#">Woodview Construction</a> Rising Star Welcome Hunter (restricted to 90cm) - HOYQ	85cm	\$10
15	<a href="#">Woodview Construction</a> Rising Star Hunter (restricted to 90cm) - HOYQ	85cm	\$10
16	<a href="#">Woodview Construction</a> Rising Star Hunter (restricted to 90cm) - HOYQ	90cm	\$10
17	<a href="#">Craig Walker Building Removals</a> Welcome Hunter - HOYQ	90cm	\$10
18	<a href="#">Craig Walker Building Removals</a> Open Hunter - HOYQ	100cm	\$10
19	Burger King <a href="#">Fougere Orthopaedics</a> Junior Equitation National Series	100cm	\$15
20	Petticoat Lane Performance Horses <a href="#">Fougere Orthopaedics</a> Adult Equitation National Series	100cm	\$15
7	Open Horse Handy Hunter - HOYQ	100cm	\$15
21	Gyro Plastics <a href="#">Woodview Construction</a> Junior High Points National Series - HOYQ	100cm	\$15
22	The Ultimate Egg Co <a href="#">Woodview Construction</a> Amateur High Points National Series - HOYQ	100cm	\$15
23	<a href="#">Craig Walker Building Removals</a> Open Hunter - HOYQ	105cm	\$10
24	NRM <a href="#">Woodview Construction</a> Open High Points National Series - HOYQ	110cm	\$15

PONY RING – 7am Warm Up Start – 8am Class Start		Height	EF
25	Category A Warm Up	60cm	\$2
26	<a href="#">Johnston Associates</a> Category A Welcome Hunter - HOYQ	60cm	\$10
27	<a href="#">Fougere Orthopaedics</a> Category A Equitation Series	60cm	\$15
28	Cartown <a href="#">Johnston Associates</a> Category A High Points National Series - HOYQ	70cm	\$15
29	Category B Warm Up	70cm	\$2
30	<a href="#">Kumeu Motors</a> Category B Welcome Hunter - HOYQ	70cm	\$10
31	<a href="#">Fougere Orthopaedics</a> Category B Equitation Series	70cm	\$15
32	Grassyards Farm <a href="#">Kumeu Motors</a> Category B High Points National Series - HOYQ	80cm	\$15
33	Category C Warm Up	80cm	\$2
34	<a href="#">Burmester Realty</a> Category C Welcome Hunter - HOYQ	80cm	\$10
35	Sure Grip Mat <a href="#">Fougere Orthopaedics</a> Pony Rider Equitation National Series	80cm	\$15
36	Aniwell <a href="#">Burmester Realty</a> Category C High Points National Series - HOYQ	90cm	\$15



## SUNDAY 24 NOVEMBER 2019

All classes in the Premier Ring will be scheduled upon close of entries, this will be sent out prior to the commencement of our show.

PREMIER RING – No Warm Up		Height	EF
37	Category A Handy Hunter - HOYQ	70cm	\$15
38	<a href="#">Fougere Orthopaedics</a> Category A Dynamic Hunter Classic	70cm	\$20
39	Category B Handy Hunter - HOYQ	80cm	\$15
40	<a href="#">Fougere Orthopaedics</a> Category B Dynamic Hunter Classic	80cm	\$20
41	Category C Handy Hunter - HOYQ	90cm	\$15
42	<a href="#">Fougere Orthopaedics</a> Category C Dynamic Hunter Classic	90cm	\$20
43	Open Handy Hunter - HOYQ	100cm	\$15
44	<a href="#">Fougere Orthopaedics</a> Open Horse Dynamic Hunter Classic	100cm	\$20

HORSE RING – 7am Warm Up Start – 8am Class Start (INTRO RIDERS ONLY)		Height	EF
45	Introductory Hunter Warm Up	70cm	\$2
46	<a href="#">King Equine Osteopathy</a> Introductory Hunter (restricted to 80cm)	70cm	\$8
47	<a href="#">King Equine Osteopathy</a> Introductory Hunter (restricted to 80cm)	75cm	\$8
48	<a href="#">King Equine Osteopathy</a> Introductory Hunter (restricted to 80cm)	80cm	\$8
49	<a href="#">Woodview Construction</a> Rising Star Hunter (restricted to 90cm) - HOYQ	85cm	\$10
50	<a href="#">Woodview Construction</a> Rising Star Hunter (restricted to 90cm) - HOYQ	85cm	\$10
51	<a href="#">Woodview Construction</a> Rising Star Hunter (restricted to 90cm) - HOYQ	90cm	\$10
52	<a href="#">Craig Walker Building Removals</a> Open Hunter - HOYQ	90cm	\$10
53	<a href="#">Craig Walker Building Removals</a> Open Hunter - HOYQ	100cm	\$10
54	Burger King <a href="#">Fougere Orthopaedics</a> Junior Equitation National Series	100cm	\$15
55	Petticoat Lane Performance Horses <a href="#">Fougere Orthopaedics</a> Adult Equitation National Series	100cm	\$15
56	Gyro Plastics <a href="#">Woodview Construction</a> Junior High Points National Series - HOYQ	100cm	\$15
57	The Ultimate Egg Co <a href="#">Woodview Construction</a> Amateur High Points National Series - HOYQ	100cm	\$15
58	<a href="#">Craig Walker Building Removals</a> Open Hunter - HOYQ	105cm	\$10
59	NRM <a href="#">Woodview Construction</a> Open National High Points National Series - HOYQ	110cm	\$15

PONY RING – No Warm Up – 8am Class Start		Height	EF
60	<a href="#">Johnston Associates</a> Category A Open Hunter - HOYQ	60cm	\$10
61	<a href="#">Fougere Orthopaedics</a> Category A Equitation Series	60cm	\$15
62	Cartown <a href="#">Johnston Associates</a> Category A High Points National Series - HOYQ	70cm	\$15
63	<a href="#">Kumeu Motors</a> Category B Open Hunter - HOYQ	70cm	\$10
64	<a href="#">Fougere Orthopaedics</a> Category B Equitation Series	70cm	\$15
65	Grassyards Farm <a href="#">Kumeu Motors</a> Category B High Points National Series - HOYQ	80cm	\$15
66	<a href="#">Burmester Realty</a> Category C Open Hunter - HOYQ	80cm	\$10
67	Sure Grip Mat <a href="#">Fougere Orthopaedics</a> Pony Rider Equitation National Series	80cm	\$15
68	Aniwell <a href="#">Burmester Realty</a> Category C High Points National Series - HOYQ	90cm	\$15



## OUR DYNAMIC HUNTER

'We want to offer something unique, something that captivates both the horse and rider.'

Last season many of you would have seen our first step in changing how Show Hunter is perceived here in New Zealand, with stepping out of the typical figure eight course, eliminating ground poles and standard flower box fill. As a committee we received a lot of positive feedback, with a lot of the children wanting to 'jump what the hacks jumped'. So, this season we have taken it up a step and provided a Premier Ring that allows everyone to have a turn.

Many of you may have seen some of the technical challenges offered in the American hunter that we don't see here in New Zealand. Our Handy Hunter courses typically include a roll back and a bent line. Our Equitation courses typically include a trot fence and a halt. Our committee alongside our course designer have taken it up a notch to offer a class that is more reflective of what is seen in the American hunter specialty classes. These classes are not HOY qualifying.

On Saturday we have kept the course simpler as an introduction for what to expect in our Premier Ring. On Sunday we have stepped it up a level with a twelve-jump course rather than having a call back. This is not to be missed!!

## CONDITIONS OF ENTRY

### Membership Requirements

- Riders require a full ESNZ Annual Membership to enter any Registered Classes.
- Introductory riders or riders not registered with ESNZ can compete in Introductory Classes (80cm & under for Horses) on an Introductory Membership or Casual Membership Day Start (\$15 per day).

### Registration Requirements

- ESNZ Jumping Levy (\$5 per show) is compulsory and is payable by all horses and ponies competing in Show Hunter or Jumping.
- HOYQ (Horse of the Year Qualifier Classes) – Full ESNZ Registration & Full Jumping Annual Start in order to be allocated HOYQ points.
- Equitation and High Points Series Classes – Full ESNZ Registration & Full Jumping Annual Start.
- Unregistered horses and ponies (or horses and ponies registered with ESNZ with no annual jumping discipline start) can start using a Casual Jumping Levy of \$20 per show in addition to the \$5 ESNZ Jumping Levy. HOYQ points will not be allocated and the rider must be a full member of ESNZ.

### Entry Restrictions & Conditions

- Please see the SH rules on the ESNZ website for complete age and eligibility definitions for pony, junior, amateur and adult classes.
- Ponies may only enter one height category for the show, this excludes Equitation.
- Entries will be restricted to a maximum of five classes per horse and pony per day.
- Pony High Points – ponies may only enter the correct height related category. All ponies must have a current height certificate which can be requested for viewing by any show official. These height categories are as follows: Category A – 133cm & under, Category B – over 133cm & up to 143cm, Category C – over 143cm, up to and including 148cm.
- Riders are allowed to ride one mount only in each Equitation class. Pony riders can ride equitation in more than one category.
- Equitation Pony rider classes are open to any aged pony rider.
- Horses and ponies competing using the Casual Jumping Levy are not eligible for HOYQ Points (but are eligible for prize money) and cannot compete in any National Series classes.
- The Rising Star Series is open to those horses not jumping over 90cm for the duration of the show.
- All classes are run under ESNZ rules. Show Hunter rules can be downloaded from [www.nzequestrian.org.nz](http://www.nzequestrian.org.nz)
- All competitors enter at their own risk and must be familiar with the Health & Safety Policy for both Show Hunter Waitemata and Woodhill Sands Equestrian Centre.
- All stallion riders and handlers must wear stallion armbands when mounted and handling their stallion.
- No non-competing horses are allowed on the property, every horse that enters the property must be entered into at least one class.
- No dogs are allowed on the property, this will result in instant elimination and you will be politely asked to leave.



- The organising committee reserves the right to alter, combine or cancel classes.
- The organising committee reserves the right to not accept an entry without an explanation.

## Yarding & Camping

- Yards and camping are available for the duration of our show, please ensure you let us know your requirements at time of entry.
- Yards \$25 per horse or pony per show.
- Covered yards \$50 per horse or pony per show.
- Camping \$20 per truck or float (up to 2 people) per show, \$25 per truck or float (3 or more people) per show.
- The earliest arrival time is 2pm the day before unless prior arrangements have been made with Woodhill Sands.
- Allocated yarding details will be emailed to you, there will also be a copy made available on site.
- You must use your allocated yard and leave it clean; they will be checked prior and post show. A cleaning fee will be charged of \$25 to clean out any yards left with dung or hay.
- Please report any damage to Angela at Woodhill Sands on 0274 WSands.

## CONDITIONS OF ENTRY CONTINUED

### Entry & Payment Information

- Online entry through [www.equestrianentries.co.nz](http://www.equestrianentries.co.nz)
- Payment to be made through Polipay or Stripe at time of entry.
- Fees to be included with Entry:
  - o Compulsory Woodhill Sands Ground & Administration Fee \$25 per horse or pony
  - o Compulsory SH Waitemata Medic Fee \$5 per horse or pony
  - o Compulsory ESNZ Jumping Levy \$5 per horse or pony
  - o If applicable Casual Jumping Levy \$20 per horse or pony
  - o If applicable Casual Membership Day Start \$15 per day
  - o Class entry fees as per programme
- All late entries and entries on the day will incur a \$25 penalty.
- All class changes to be made at the office prior to class commencement, changes are \$2 per class.
- Scratchings to email to [showhunterwaitemata@gmail.com](mailto:showhunterwaitemata@gmail.com), scratchings must be accompanied by a medical or veterinary certificate prior to the class commencement for a refund. Please note that the ground, administration and yard fees are non-refundable.

### Warm Up's

- To be entered online through Equestrian Entries at time of entry, they will not be available at the gate.
- Only one warm up per horse or pony before their specific category.
- Warm ups in the hack and pony rings are only available on Saturday.

### Prize Money

- Prize money will be paid in cash at the show, this is to be collected and signed for at the office, no prize money will be posted.
- Prize money will be paid providing a qualifying score of 66% and above is achieved.
- Prize money will be paid out as per entry fees below.

Entry Fee	1st Place	2nd Place	3rd Place	4th Place	5th Place
EF \$8	Rosette Only	Rosette Only	Rosette Only	Rosette Only	-
EF \$10	\$30 + Rosette	\$20 + Rosette	\$10 + Rosette	Rosette Only	-
EF \$15	\$40 + Rosette	\$30 + Rosette	\$20 + Rosette	\$10 + Rosette	-
Dynamic Hunter	\$50 + Sash	\$40 + Sash	\$30 + Sash	\$20 + Sash	\$10 + Sash
Dynamic Hunter Classic	\$100 + Sash + Rug	\$80 + Sash	\$60 + Sash	\$40 + Sash	\$20 + Sash



## 2019 – 2020 SUMMER SERIES PRIZES

### Summer Series Show Dates 23 & 24 November 2019 & 22 & 23 February 2020

Open to all Horses and Ponies competing in the Waitemata Summer Series. Presentations will be mounted on 23 February 2020. Overall series points will be allocated for the top three rounds per day. Points will be awarded for 1<sup>st</sup> – 5<sup>th</sup> as long as the score is 66% or higher. In the case of equal points, the overall placings will be determined by the number of first placings, etc.

#### Johnston Associates – Category A Pony – Most points accumulated in Category A Classes excluding Equitation

- Champion Rug & Sash
- Reserve Champion Sash
- 3<sup>rd</sup> Place Getter Sash

#### Kumeu Motors – Category B Pony – Most points accumulated in Category B Classes excluding Equitation

- Champion Rug & Sash
- Reserve Champion Sash
- 3<sup>rd</sup> Place Getter Sash

#### Burmester Realty – Category C Pony – Most points accumulated in Category C Classes excluding Equitation

- Champion Rug & Sash
- Reserve Champion Sash
- 3<sup>rd</sup> Place Getter Sash

#### King Equine Osteopathy – Introductory Horse – Most points accumulated in Introductory Horse Classes

- Champion Rug & Sash
- Reserve Champion Sash
- 3<sup>rd</sup> Place Getter Sash

#### Woodview Construction – Rising Star Horse – Most points accumulated in Rising Star Horse Classes

- Champion Rug & Sash
- Reserve Champion Sash
- 3<sup>rd</sup> Place Getter Sash

#### Craig Walker Building Removals – Open Horse – Most points accumulated in Open Horse Classes excluding Equitation

- Champion Rug & Sash
- Reserve Champion Sash
- 3<sup>rd</sup> Place Getter Sash

#### Fougere Orthopaedics – Equitation Series – Most points accumulated in Equitation Classes

- Cat A Rider Champion Rug & Sash
- Cat B Rider Champion Rug & Sash
- Pony Rider Champion Rug & Sash
- Combined Junior & Adult Rider Champion Rug & Sash

#### Show Hunter Waitemata – Handy Hunter Series – Most points accumulated in Handy Hunter Classes

- Cat A Champion Rug & Sash
- Cat B Champion Rug & Sash
- Cat C Champion Rug & Sash
- Horse Champion Rug & Sash



## HEALTH & SAFETY POLICY

Show Hunter Waitemata in conjunction with Woodhill Sands Equestrian Centre is committed to providing and maintaining a safe and healthy event for all participants, supporters and spectators.

We will take all practicable steps by:

- providing a safe event, safe equipment and proper materials
- identifying and monitoring hazards using the hazard management hierarchy of eliminate, isolate or minimise
- insist upon establishment of safe methods and best practices
- comply with all health and safety legislation, regulations and codes of practice

We will take responsibility for health and safety procedures, however, ALL PEOPLE AT THE EVENT need to be aware of their own responsibilities and comply with the events health and safety policy.

COMPETITORS will be responsible for themselves at ALL times by observing safe practices and rules/instructions relating to their competition.

Every person involved in the event run by Show Hunter Waitemata is encouraged to play a vital and responsible role in maintaining a safe and healthy event through

- being involved in the event health and safety system
- following correct procedures
- safe and proper use of equipment
- wearing protective clothing and equipment as and when required
- reporting any pain or discomfort as soon as possible
- ensuring all accidents and incidents are reported
- helping new participants, helpers and visitors to understand the right safety procedures and why they exist
- informing the office immediately of any health and safety concerns
- keeping the event facilities tidy to minimise the risk of any trips and falls

### ESNZ Blue Card Policy

The ESNZ Blue Card Process has been developed to keep riders safe and to support officials in their duty of care.

- Officials can exclude a rider from participating in a competition or entire event by issuing a Blue Card because the rider has received a serious injury, including concussion or suspected concussion.
- If a rider is issued with a Blue Card this will be recorded on their ESNZ profile and the rider will not be able to compete until they have received official medical clearance from a registered GP or medical specialist and sent this to ESNZ.
- If a rider who has been issued with a Blue Card competes without medical clearance or refuses to withdraw from an event, this may result in disciplinary action being taken by ESNZ.
- Riders issued with a Blue Card at an event are advised NOT to drive home from the event and must arrange alternative transport for them and their horse/s.

## HELMET TAGGING

ESNZ

**TAG PLACEMENT**  
Wrap the helmet "tag" around the harness, high up, so it is visible, but out of the way



HELMET STANDARDS ARE USUALLY FOUND IN THE HELMET'S LINING:

- i on an info tag;
- direct onto the lining;
- or on a sticker.

RED TAG	
<i>Compulsory from 1 August 2017</i>	
HELMET STANDARD	SAFETY MARK
AS/NZS 3838 (1998, 2003 or 2006)	
VG1	
ASTM-F1163	
PAS 015:1998 or 2011	
Snell E2001	
BLUE TAG	
<i>Non Compliant from 1 August 2017</i>	
HELMET STANDARD	
EN 1384	
BSEN 1384	

Please read the full document link below to understand what this involves:

<https://www.nzequestrian.org.nz/wp-content/uploads/Blue-Card-Officials-booklet-final.pdf>

FOR ANY INFORMATION ON HEALTH & SAFETY AT ANY TIME PLEASE CONTACT THE EVENT HEALTH & SAFETY OFFICER

VANESSA VERT-SMITH 021 406 276

