



DRAFT MINUTES

Dressage NZ Planning Forum 2025

Tuesday 15th April 7.00pm - 9.30 pm



Order of Meeting: Remits & Discussion Items followed by General Business

The meeting focused on discussing and voting on proposed changes to the dressage rules, with remits submitted on arena familiarization, scores below 55%, and the use of bitless bridles in dressage with a veterinary dispensation.

Topics for discussion included the possibility of including pony classes for levels 1-3 at the National Championships, and a proposal to require qualification for riders at the Young Rider Festival. The meeting covered ways to encourage more participation in local dressage shows, the 2025-26 calendar and the need for a larger gap between the National Championship and the Horse of the Year Show for the benefit of all participants (horses, riders, officials and volunteers) at both events.

Attendees Voting		
Sarah Hazlewood	Board Acting Chair/Finance	
Andrea Raves	Board Development	
Christine Latch	Board Marketing & Comms	
Suzanne Inglis	Board Technical	
Rachel McCallum	Committee/Steward General	
Anna Gale	Committee Riders Rep SI	
Fiora Au	Committee Riders Rep NI	
Meg Johnston	Committee/Youth	
Peri Scrivenor	Delegate for Olivia Coggin	Ashburton
Rosie Richards	Delegate	Auckland
Barb Clarke	Delegate	Bay of Plenty
Maddison Brown	Delegate	Central Districts
Sue Harris	Delegate	Gisborne
Pip Forsyth	Delegate	Marlborough
Genevieve Quin	Delegate	Northern Hawkes Bay
Lois Andrewes	Delegate	Northland
Cushla Cain	Delegate	SCNO
Julia Latham	Delegate	Southland
Kylie Littleford	Delegate	Taranaki
Suzanne Inglis	Delegate for Amy Shattock	Nelson
Nicola Wills	Delegate	Waikato
Tracey Cooper	Delegate	Wairarapa
Andrea Fuehrer	Delegate	Waitemata
Jacqui Thompson	Delegate	Wellington
Jackie Thomas	Delegate	Otago
Jenny Pearce	Delegate for Bernice Frost	Taihape
Mary Craine	Delegate for Rachel Fouhy	Southern Hawkes Bay
Margaret Grant	Delegate for Sally Cooper-Johnston	Canterbury

Attendees Non-Voting		
Wendy Butler	Observer	Otago
Rochelle Smith	Observer	Southland Chair
Catriona MacFarlane	Observer	
Gina Mabey	Observer (Remit re Bitless Bridles)	
Betty Brown	Observer	Auckland
Belle Clark	Observer	Bay of Plenty
Cherie Pearson	Observer	Canterbury
Susan Tomlin	Observer	Central Districts
Linda Brown	Observer	Rotorua
Hailey Rhyne	Observer	Southland
Juliet Iremonger	Observer	Tauranga Chair
Jody Hartstone	Observer	Waikato
Nikki Williamson	Observer	Waikato
Christine Weal	Observer /Dressage HP Manager	

In Attendance

Jo Colin	General Manager Community /ESNZ
Jos Gresham	Observer/Poll Manager
Wendy Hamerton	Sport Manager

Apologies:

Mura Love:	Judges Officer / Board (In transit back from Judging at a CDI in India)
Amy Shattock	(Nelson Delegate)
Olivia Goggin	(Ashburton Delegate)
Sally Cooper-Johnston	(Canterbury Delegate)

The SM advised the meeting that the long-time Taihape Delegate Bernice Frost is in the Rehab unit at Wanganui Hospital and suggested that areas could send a get well message to Bernice

Sarah Hazlewood, Acting Chair / Finance Officer, opened the meeting at 7.07pm

and thanked the Sport Manager and Jos Gresham for their admin support

The Sport Manager thanked Sarah on behalf of the Discipline for stepping up as Chair on the retirement of Sue Hobson in January. and outlined Sarah's involvement with Dressage NZ. The SM also proposed a vote of thanks to Sue for her time as Chair, recognizing her commitment and passion, particularly for judging. The SM noted Sarah has been involved from grassroots right through to national level for a long time, and brings a wealth of experience to the sport and stepped up to fill the role and creating a relatively seamless transition in Board activity

S Hazlewood DNZ Resume

Finance Manager for an engineering company for the past 20 years

- DNZ Board Member for the past 7 years responsible for Finance
- Experience on the ESNZ Board, standing in for both Scott McKenna and Sue Hobson as required
- Ridden competitively to PSG
- Past Canterbury Dressage Group Entries secretary
- Past Canterbury Dressage Group Treasurer
- Past South Island Champs Treasurer
- Past Selwyn Rakaia Riding Club President and Treasurer

REMITTS

The SM reminded the meeting that Conference 2024 moved that unless a remit was intended to change a rule in respect of Horse/ Rider Welfare/Safety, or clarification of a rule, then changes would only be made aligning with the FEI four year cycle

Remit 1:

Topic Arena Familiarisation: Article 486.5

Moved: Debbie Barke

Seconded: Otilie Upshall

Amend the rule to include the words INSIDE for eg “when possible include the area around and INSIDE the competition arenas”

Add. “ and INSIDE . This will also reflect what happens currently at the proactive shows and FEI”

Rationale:

The benefit to the horse and rider to have time inside the arena to familiarize the horse can be very valuable

With a greater understanding of horse behaviour and learning this can really help some horses, and help deliver a less stressful experience for the horse

For the horses that are not naturally brave, inexperienced, suspicious or many other variants in horse behaviour time in an unfamiliar space can assist them to feel more confident.

We have evolved with our training and understanding of horses learning that it is an important aspect of welfare to allow horses time to adjust to new environments

Will help give riders more confidence and a better show experience as well as benefitting the horse. In arena time is very difficult to replicate at home. Riders love the opportunity. It is common practice in the rest of the world and will help promote the sport in a better light to have less stressed horses

Whilst many shows offer this there is still a majority of OC's and stewards that still believe the rule is walk only around the arenas. We need to highlight that we in NZ have evolved and when possible facilitate this as much as possible. Walking around the outside does not prepare the horse with their unique vision to see things in the same way as when ridden in a test for example riding a line of changes towards a banner/doorway/speaker etc.

Sometimes rider safety is cited. This is VERY unlikely to be an issue as warm up areas are often way more congested than arenas at familiarisation times. Riders do not wish to cause or have an accident. Riders are acutely aware of their horses safety, and fellow riders. Riders not following arena rules or “hogging” arenas can be talked to by stewards- no different than in the ordinary warm up

Stewards are there for “walk only around the arenas” so allowing riding inside the arenas doesn't require extra manpower

DNZ Comments:

There is a lack of clarity in the book: Article 486.5 and 486.1 are quite closely related, and there is some anomaly between 486.4 and 486.5. One refers to training / working in the arena, and the other arena familiarization.

Medics would need to be on site too for any extra time required. This can already be an expensive event cost.

Technical Committee: (Suzanne Inglis)

The TC was of the view that the rule did not need to be changed, because there's already the capacity for the OC if they have the time and resource to manage this. That the TC does not wish to mandate it

Steward General (Rachel McCallum)

An example is at HoY and Nats where time is very tight and equal opportunity would need to be given to all riders. OC will do their best.

Margaret Grant (Canterbury)

Agreed rule clarity is required

Vote:

FOR	10
AGAINST	17

Remit 1: Failed

Action: It was agreed the TC should review the rule re definitions of **Working in, Training & Arena Famil** and bring back to conference with a view to clarify **Rule 486**

REMIT 2:
NEW RULE

Topic: Minimum Scores in Level 6,7,8,9 Article 486.5

Moved: Jody Hartstone **Seconded** Debbie Barke

Horses that score less than 55% on more than three occasions within one calendar year in a particular level will no longer be eligible to enter that level until the following criteria are met:

The horse must achieve three scores of 55%, or higher on the level below before being permitted to compete at the original level again

At times, we see horses in dressage being pushed beyond their current capabilities, leading to consistently low scores from Judges. This raises concerns about horse welfare and the sport's Social License to Operate

If Judges were aware of a formal lower performance threshold, they could confidently score struggling horses below the 55% mark when necessary - sending a clear message to riders that the horse is not yet ready for that level. By setting the threshold at three scores below 55% within one calendar year, this remit allows for occasional bad days while still addressing repeated underperformances. The requirement to demonstrate improvement by achieving three scores of 55% or higher in the level below ensures that both horse and rider have developed the necessary skills before returning to the higher level,

This rule change promotes fairness, protects horse welfare, and upholds the integrity of the sport by ensuring that combinations are competing at an appropriate level.

Discussion:

A report from Evo Events showed that in the previous 12 months, there were a total 76 tests across levels 6-9 who did not achieve 55%. Of those 76, 30 were either RET or EL.

Would it be more positive if you had to achieve qualifying scores to go up a grade? C Latch considered this a strong approach for the sport

Would it be based on rider honesty or would it the rider entry be flagged as ineligible and a simple system for OC to recognise without checking entries.

How to recognise combination EL or RET as result of bad score potentially showing ?

Jo Colin suggested support be put in place for the need to have a difficult conversation with a rider

Should it only apply to Levels 6-9 ? Across all levels supports The Training scale.

Internationally 50% is recognised as sufficient

NI Riders Rep supports perhaps both qualifying to go up a level as well as having to go back down if not gaining scores considered of a level agreed. If had to choose one methodology, which would it be

Need to ensure horses don't get "downgraded" to Level 5 with nowhere to go

Central Districts interested is

TECH CTE: (S Inglis)

Noted the TC has been discussing if the grading system needs an overhaul.

Jody Hartstone advised that she had been approached by someone to submit this remit – it was not her remit, that it was a first draft really. That we must always be advocating for the horse – some conversations and topics are difficult. Should judges just be ringing the bell for an EL ?? Then no need for this conversation. Hard for a coach to tell a rider they shouldn't be competing at a higher level.

The Australian & British systems were both outlined - neither allocated grading points on musicals owing to the different judging and coefficients on musical. A discussion with an Australian judge has indicated they saw some pitfalls in their system that forced combinations to move up a level in the lower grades

Hailey Rhyne (Steward) considered that this needs to be presented and phrased very carefully so as not to be seen to be elitist & off putting for grass roots riders

Lois Andrewes (Judge) need to somehow encourage riders to be getting better % before moving up and the system also needs to cater for experienced and inexperienced riders who have quite different capabilities

Jackie Thomas (Otago) noted that often in smaller areas, higher levels have one judge and can be on both tests on same day – can have a strong influence on this concept – needs to be considered seriously before any implementation.

Christine Latch: Had some feedback from a member in her area, saying, Oh, well, that's just going to make it very elitist, because people like me, who can't afford a warmblood will never be able to go up the grades and have a go.

Action:

It was agreed to get more data prior to conference, consider surveying the membership, and appoint a working group at conference

Working Group to involve the Tech Cte. A Raves, L Andrewes, H Rhyne offered to be part of the group. Jody Hartstone said she needed to be on the group as it was her remit.

The SM considered that grass roots riders need to be involved also as they are likely to be affected

The Remit as proposed was not put to the vote

REMIT 3

Topic: Use of Bitless Bridles with Veterinary Dispensation for Mouth Pain

Moved: Gina Mabey **Seconded** Natalie Page

Application for a rule change to allow the use of bitless bridles in Dressage Competitions in New Zealand.

I propose a discussion for the potential use of bitless bridles in competition with an accompanying veterinary certificate to ensure both the horse's welfare and the rider's safety. Given the growing body of evidence supporting bitless options, it is essential to reconsider the current regulations surrounding bit use in competitive settings.

I bring to your attention recent research highlighting the significant welfare benefits of using bitless bridles for horses, particularly in equine competitions. Studies by Mellor (2020), Christensen and Uldahl (2024), and Luke et al. (2023) underscore the physiological and behavioural advantages of transitioning from traditional bits to bitless alternatives. These findings suggest that bitless bridles reduce pain and discomfort and improve the horse's overall welfare, performance, and the relationship between rider and horse.

The full 8 page documentation can be found in the link to the **Full Agenda on the ESNZ website** .

Gina used the example of her own horse who could not tolerate a bit owing to have had three teeth extracted following a paddock accident. Dressage riders can apply for dispensation for some sort of injury or disability that affects them to ride their tests efficiently. Bits can be a major welfare issue.

There are 5 countries allowing bitless bridles to be used in dressage competitions up to international levels. These are Australian Pony Club Association. Hungary, Holland, Denmark and Kenya.

Judging in Holland, for example, horses compete in the same class as bitted bridles, they are judged the same for the word submission. Instead of saying acceptance of bit, they say acceptance of the hands of correct position of head and neck.

Gina explained in detail how a Vet dispensation Certificate could be implemented, taking into account safety & control, and the benefits to the horse.

Discussion:

There was a lengthy discussion led by Gina

Dressage NZ is currently contracted by copyright to the USDF tests which under Submission refer to **acceptance of the bit and USDF rules do not permit bitless bridles**

Suggested that when out tests come up for review in 2026, consider potential use of bitless bridles

That if a horse is in mouth pain that does not permit a bit to be used, should it be competing?

The TC considered that the possible complexities and monitoring of the dispensation process suggested raised concerns and that a rider dispensation is not a valid parallel: horse/human

The Remit Failed

Yes: 8 Votes

No: 19 Votes

GENERAL Items SUBMITTED

Pony Classes for levels 1-3 at the National Championships

The committee discussed the possibility of including pony classes for levels 1-3 at the National Championships. The SM explains that this will require additional sponsorship and prize money as the pony riders in these need to be well recognised at this event.

Christine Latch advised mentions that Dressage has divided TackShop Youth rising stars league into separate pony and young rider sections.

Cushla (South Canterbury) noted that riders in her area would be keen to bring their ponies to larger competitions if separate classes were available.

The committee agreed that it's a beneficial idea in principle.

Action:

The nationals organizing committee to explore further, amending the schedule and bring back to conference

Qualification Proposal for Young Rider Festival

The group discussed a proposal from Dressage Wellington to require prior qualification for riders at the Young Rider Festival, particularly for national title classes. Jacqui Thompson explained the proposal aimed to create a more level playing field by ensuring riders have some commitment to the horses they compete on. The discussion covers various perspectives, including concerns about limiting opportunities for young riders, the value of borrowed horses for gaining experience, and the potential impact on entries. Christine Weal provides context about specific cases where riders work closely with the borrowed horses. Jody Hartstone shared a personal experience of winning on a borrowed horse, arguing that the sport inherently involves advantages and disadvantages. The meeting does not reach a clear consensus, with some supporting qualification requirements and others preferring to keep the event more open and accessible.

Action: That no prior qualification be required for the 2026 event

Encouraging Participation in Local Dressage Shows

The group discussed ways to encourage more participation in local dressage shows, particularly for riders who want to compete at higher levels but find full ESNZ rider membership and horse registration fees too expensive. Several areas report offering ungraded classes at all levels, allowing riders to compete using day memberships and flexi starts. This approach has been successful in attracting more entries and allowing riders to participate without the pressure of full ESNZ registration.

Noted that for graded classes Level 2 & above, riders are required to pay for full ESNZ membership, which is a broader issue for the organization at large to consider for riders who wish to compete in graded classes.

The discussion then shifted to the topic of encouraging more riders to participate in competitions, particularly at the higher levels. Suggestions included offering non-graded tests for riders above level 2, running non-graded classes alongside graded ones, and possibly introducing a national non-graded series. The importance of grassroots riders was emphasized, and the need to make the sport more accessible and appealing to them was discussed. The conversation ended with a discussion about the benefits of non-graded series and the potential for a national non-graded series. That a session be held at conference re encouraging participation.

See page 15 for some ideas submitted after the meeting **by Lois Andrewes from Dressage Northland** to start the discussion - thank you Lois for taking the time send this paper

ESNZ Website Information and Competitions

Betty Brown expressed concerns about the difficulty in finding information on the ESNZ website, particularly the flow chart for each discipline. That a flow chart found appeared to have incorrect information. The SM advised a document is still available and will send the link to Betty .

The Dressage Conference & Awards Dinner bookings, with area delegates receiving travel subsidies which are derived from the Centre Line Levies collected.

The Horse of the Year show in 2026 will be held from March 24-29, which will affect the scheduling of the national championships. The group discussed the need for a larger gap between national events and the Horse of the Year show.

Andrea Raves mentions the "Discovering the Dressage Connection" days, formerly known as protocol days, and requested areas to coaches and riders to participate.

GENERAL BUSINESS

1. March 31 st 2025 YTD. Financial Report Annual Starts & Centre Line Levies (TD Levies) Income running behind budget with two months still to come
2. Projected 24/25 I & E:
3. Annual, Casual & Centre Line Fees YTD & Recommendations for 25/26: Reports Pages 11-13
4. Draft Calendar 2025/26 – Areas Requested to check and update
5. DropBox – Area Access. Jos Gresham to advise procedure for new access list at Conference
6. Dressage Conference & Awards Dinner 2025 & ESNZ Hall of Fame/75 Year Anniversary – Info

1.FINANCIAL REPORTS

1.	<p>Change to Dressage Financial Management Structure</p> <p>Sarah Hazlewood advised that owing to the ESNZ implementation of the revised ESNZ constitution and reporting standard that it was an ESNZ Board requirement that all Dressage Financial transactions are being transitioned and will be managed by ESNZ Central Finance/Accounts from 1 June 2025</p> <p>Any payments to Dressage NZ will be now deposited to an ESNZ – Dressage account</p> <p>The new procedure and account for payment of centre line levies will be confirmed</p>
2.	<p>ESNZ Dressage YTD Financial Performance 31st March 2025 Report</p> <p>The YTD position does not include all expenses from the Nationals but there are no unexpected</p>

	YTD Actual	Full Year Budget
Income		
Annual Start Levies (Discipline)	93,583	112,500
Clinic Registrations	24,884	24,884
Conference Registrations	10,078	10,078
Downgrading Fees	1,696	2,000
Entry Fees	121,153	121,153
Flexi Starts	3,852	4,200
Grants Received - Other	51,381	51,381
Interest Received	10,546	12,000
Other Event Income	13,549	13,549
Sponsorship	95,003	96,577
Sundry Income	850	850
Training & Development Levy	69,235	78,000
Sales - Dressage Test Books	7,183	8,000
Sales - Stationery	4,406	6,000
Sales - Stationery - Rule Books	2,284	2,284
	309,684	343,456
Expenses		
Accident Compensation Levies	476	476
Accommodation & Meals - General	44,407	44,880
Administration	17,494	22,856
Affiliation Fees and Subs	2,878	2,878
Bank Charges	171	221
Catering and Bar Purchases	22,047	22,046
Coaching - Specialists	12,474	12,473
Depreciation - Plant and Equipment	650	780
Entry Fees - Refunds	8,450	8,450
FEI Course Expense	1,740	1,740
FEI Organising Dues	2,509	2,510
General Expenses	7,500	17,355
Gifts and Gratuities	23,090	21,790
Grants - General	12,000	17,000
Hireage	3,697	3,697
IT - Infrastructure	182	182
Judges	4,500	4,500
Medical	9,292	9,292
Postage	103	150
Printing	13,449	13,049
Prize Money	14,851	21,000
Prizes - Trophies	28,032	28,417
Promotion and Publicity	6,524	8,465
Result Processing	2,035	2,035
Service Fees Paid	10,644	10,644
Sponsor Servicing	1,948	2,808
Staff Salaries and Wages	85,983	108,435
Stationery	1,010	1,060
Stewarding	716	716
Telephone	1,142	1,322
Travel - General	52,772	57,786
Travel - Mileage	4,716	5,534
Travel - Subsidies	5,284	5,284
Uniforms	4,813	4,813
Venue & Equipment Hire	59,921	59,921
Veterinary	6,000	6,000
	473,522	532,765
	36,162	10,691
ESNZ Dressage Surplus/(Deficit)		

3 Fees 25/26

Sarah Hazlewood advised the recommendation from Dressage Board meeting held on 1st April 2025 was that there be no change to fees for Dressage Annual starts, flexi starts or centre line levies for the 2025-26 season.

Dressage Income Steams & Centre Line Levies – For Information

The graph presented at the meeting showed full year Income from Centre Line fees 2021-2024 from 1 June -31 May, and 1 June – 28 Feb 2025 YTD plus full year forecast.

The decrease in Level 1 Annual Starts is noted and aligns with area group trends in graded classes at events Area Groups and OC were thanked for their support of Centre Line Levies and event delivery. Centre Line levies form a significant Dressage income stream (approx 45%) on a user pays basis.

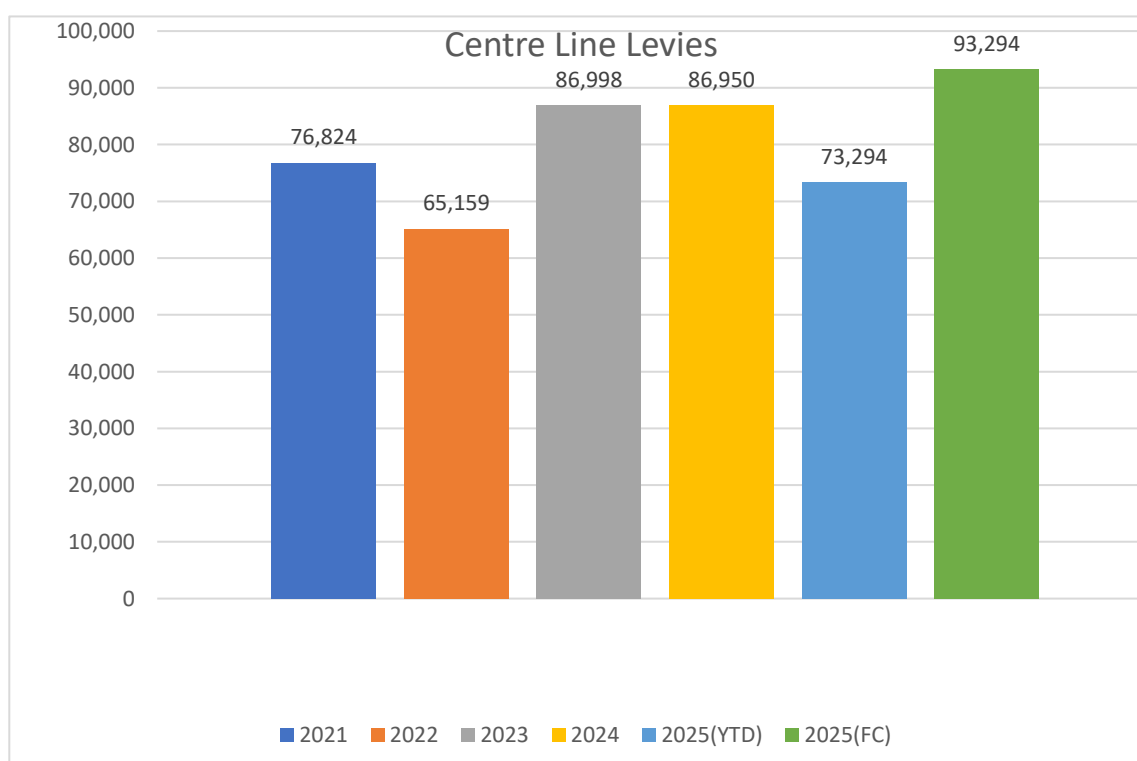
It was noted from dialogue with areas there remains some confusion by riders around income streams from ESNZ horse & pony registrations.

For clarification:

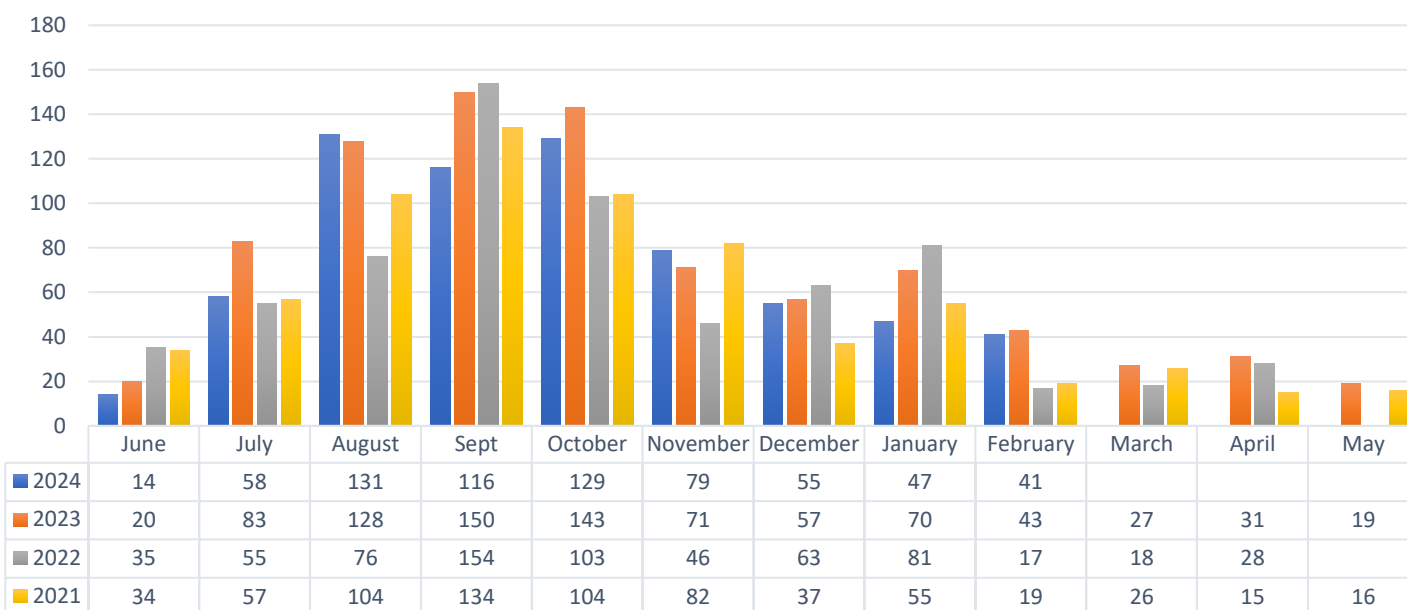
ESNZ Central Income = Annual Horse & Pony Registrations & Rider/Officials Memberships – see below 23/24 figures from Annual Report

Operating Income	\$	\$
Membership registrations	506,118	507,185
Horse registrations	397,972	403,734

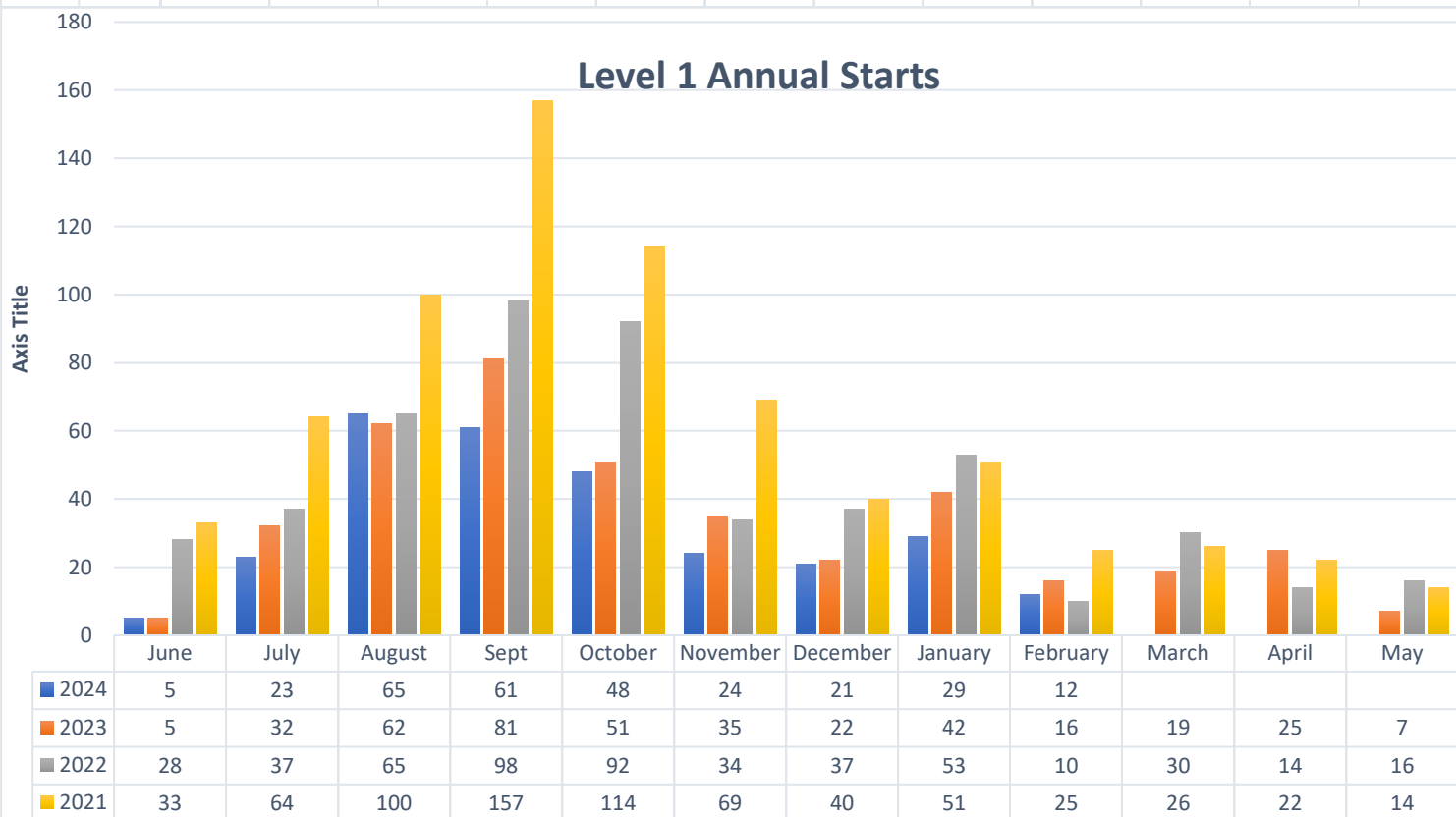
Dressage Income = Horse & Pony Annual Starts, Centre Line Levies, Casual Dressage Horse Fees for ESNZ Registered Horses without no Annual Starts
No income from ESNZ Officials memberships.



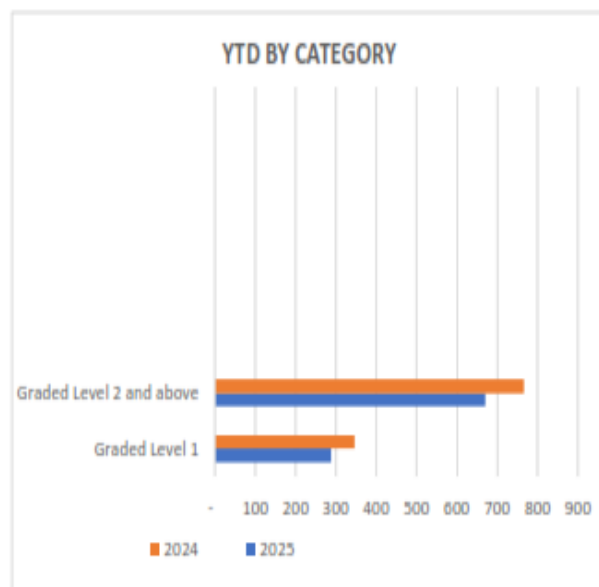
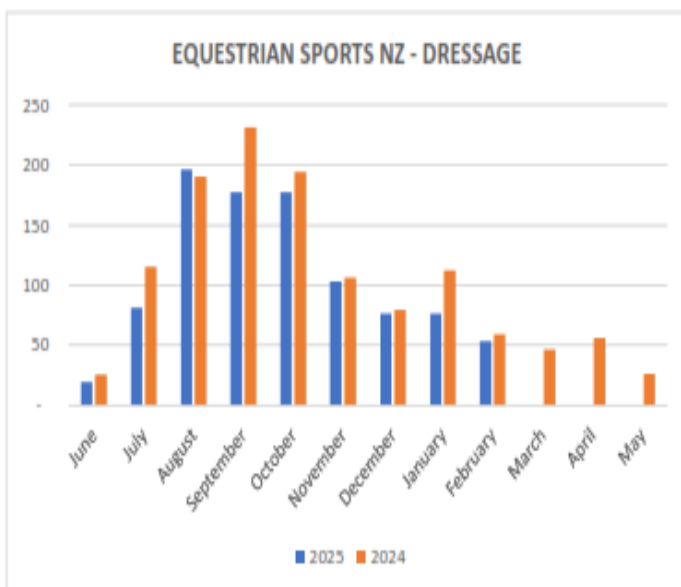
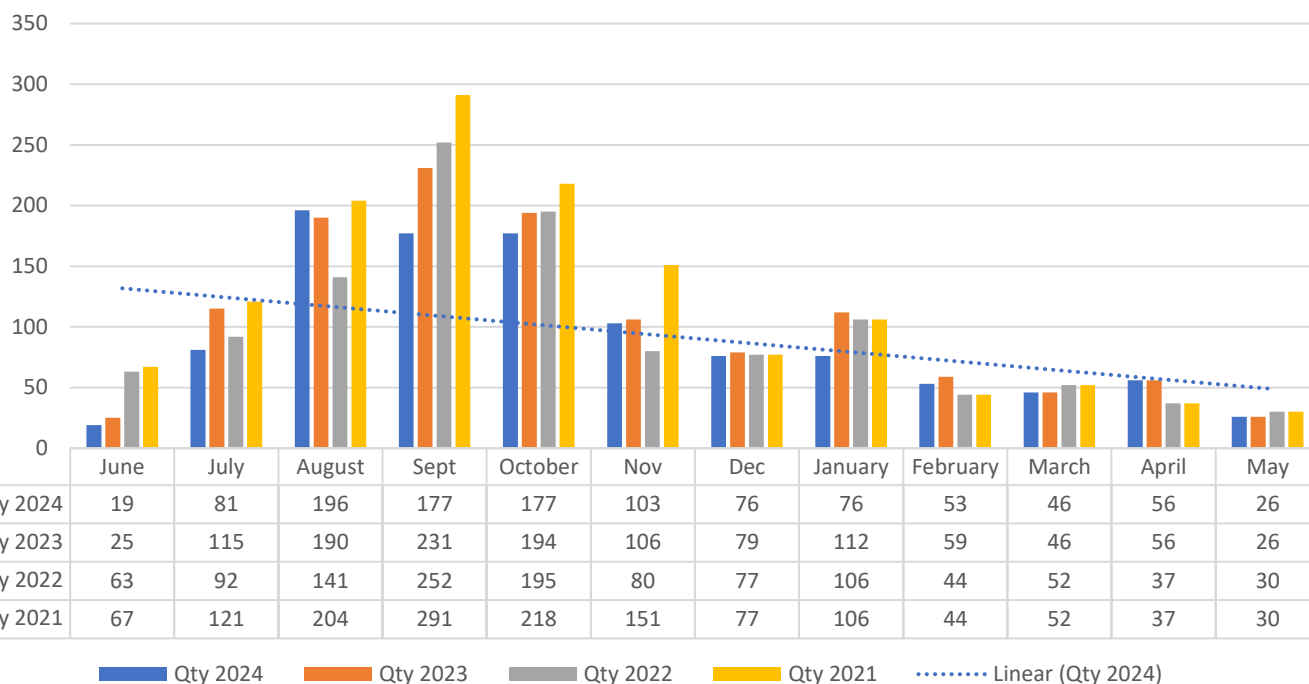
Level 2 & Above Annual Starts



Level 1 Annual Starts



Total Numbers Year Beginning Aug 2021-2024 Est only Mar-May 2025



The year to date total Dressage annual starts is 958. This is a decrease of 13.8% (153) on the prior YTD. The year to date total Dressage annual starts is \$89,042.42. This is a decrease of 7.1% (\$6,788.86) on the prior YTD.

The year to date total Graded Level 1 is 288. This is a decrease of 16.8% (58) on the prior YTD. The year to date total Graded Level 1 is \$18,131.16. This is a decrease of 17.8% (\$3,913.20) on the prior YTD.

The year to date total Graded Level 2 and above is 670. This is a decrease of 12.4% (95) on the prior YTD. The year to date total Graded Level 2 and above is \$70,911.26. This is a decrease of 3.9% (\$2,875.66) on the prior YTD.

5. Area Drop Box Access

Jos Gresham advised the current Area Dropbox will be revamped for the new season. That areas will be asked to nominate who they wish to have access to the 2025/26 version

6 ESNZ 75YR Anniversary Hall of Fame, Dressage AGM, Conference, Awards Dinner & Committee Meeting

Notice of Meetings

Saturday 28/ Sunday 29 June Dressage AGM & Conference, Awards Dinner & Committee Meeting:

James Cook Grand Chancellor Hotel | Wellington

Accommodation Booking Details:

Attendee/Group Code: 562280

Members & Delegates Online booking link:

<http://bookings.ihotelier.com/bookings.jsp?groupID=4729517&hotelID=10799>

Room Type and Rates:

Terrace Room - \$189 per night per room (Breakfast Included in rate for 1 person), \$219 per night per room (Breakfast Included in rate for 2 people)

Executive Room - \$249 per night per room (Breakfast Included in rate for 1 person), \$279 per night per room (Breakfast Included in rate for 2 people)

Method of Payment: All guests to book & pay direct

Prices include GST tax of 15%

Rates quoted are per room, per night on a single, double or twin occupancy.

Rooms & rates are held until **26th May 2025**. After this date all rooms and rates are subject to availability.

Saturday:

9am – 10am: Combined ESNZ Presentation

10am - 4pm: Dressage AGM & Conference: Registration forms/fees will be available early May



Dressage Awards Dinner: Saturday 28 June. From 6pm til late

Theme: Mid -Winter Christmas Dinner (Est Cost 95pp)

Sunday:

8.45am – 1.00pm: Committee Meeting. Observers Welcome. No fee. Morning tea only

Nomination Forms & Conference Registration / Awards Dinner Forms available following Planning Meeting

Friday 27th June –ESNZ 75th Anniversary Dinner to be held at Parliament

The New Zealand Horse Society began in 1950 and we are delighted to celebrate our 75th Anniversary with you! A 75th Anniversary dinner will be held in the banquet hall at Parliament Buildings, Wellington on Friday 27 June 2025 at 6:30 PM - midnight. We will celebrate this milestone, acknowledge this year's award recipients and also recognise our most recent Hall of Fame inductees. \$140pp Or \$1400 table/10. Includes 3 course meal and two bottles wine per table

Tickets are limited: <https://www.trybooking.com/nz/events/landing/14853?>

The Chair declared the meeting at closed 9.38pm and it was agreed that as the business had been concluded, the continuation of the meeting scheduled for Wednesday was cancelled

Submitted after the meeting by Lois Andrewes from Dressage Northland to start the discussion

Dressage Northland and Bay of Islands Dressage Group have been running unregistered classes up to Level 2 for many years at all dressage tournaments.

The registered and non-registered classes usually run together under the same judge. The riders are mixed up so the judge do not know whether they are registered or not. We have found mixing the riders encourages the non registered riders to eventually become registered when their scores improve and they realise that they are competitive with the registered riders at local events.

DN also run the non registered classes to Level 0 – 2 at the PL event.

For the past 2 years DN have run Non registered circuits for Level 0, 1 and 2 horses which are proving to be very popular. This year these circuits were sponsored by Tru You Appearance Medicine

10 horses have points in the Level 0 circuit, 9 at Level 1 and 5 at Level 2. For the past 2 seasons the winner of the Level 2 non registered circuit has registered the following season. These circuits are restricted DN or BOIDG group members but there are other riders who compete in the non registered classes at Northland tournaments, especially Horse Trial riders.

Dressage Northland has organised an open circuit and a circuit for preliminary and novice horses for about 30 years. DN have always had sponsors for these circuits and currently Matthews Hanoverians Open Circuit sponsor the open circuit and Pacific Motor Group the Novice circuit.

This season 45 horses have gained points in the MH circuit, 18 horses in the Preliminary and Novice circuit,

Two newer circuits are the Freestyle circuit sponsored by Lois Andrewes which has a lovely trophy and a circuit for registered Thoroughbreds sponsored by Avril Semmens. This season 9 horses have Freestyle points and there are 12 registered Thoroughbreds competing.

Dressage does appeal to the older rider and they compete for the Ebony trophy donated by Jean and the late Bob Jeffs, this trophy is for riders over 45 years and 26 riders gained points this year.

This year DN ran a circuit just for pony club members who are also DN members and 20 riders have gained points. This circuit was sponsored by Lisa Chuck.

Last season DN organized a Dressage Discussion day which included riders, judges and anyone interested in dressage (60 people attended) and there are plans to run another day in the spring.

DN is unable to run any events during the winter and even the spring can be a problem at Barge Park.

DN has run protocol days in early summer for several years which are very popular. Northland is fortunate to have a mentor and an assistant mentor and several very experienced judges who make these days very successful.

Last year there were 4 arenas which meant it ran in the morning and everyone took part in the discussion and asked questions during a shared lunch. Another protocol day is planned for the coming year.

DN has a training subsidy which members can apply for and is also very generous in helping judges attend seminars with travel costs.